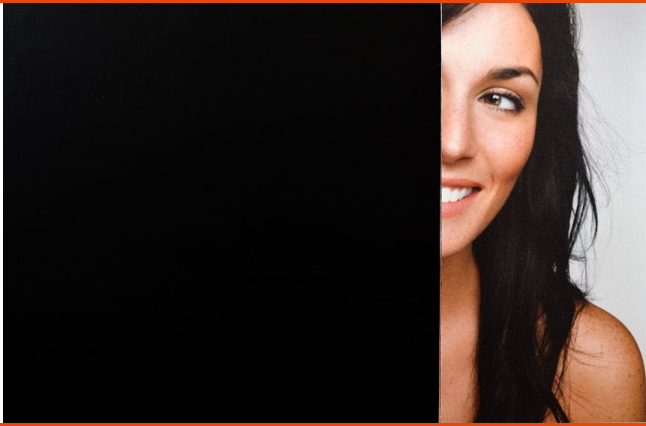


## SOLYX® Glass Finishes SX-1910 Construction Matte Black



### Product Description

SOLYX® SX-1910 Construction Matte Black is a removable, opaque, black vinyl film designed for temporary light and visibility blocking applications to hide interior construction. It is also suitable for use in decorative design applications including shop windows, glass doors, etc.

#### Specifications

Product Code	SX-1910
Product Family	Specialized Function
Film Type	Vinyl
Adhesive Type	Pressure-Sensitive
Usage	Interior or Exterior
Available Width(s)	60" (1524mm)
Full Roll Length	100 linear feet
Thickness	4 mil
Shading Coefficient	0.41
Visible Light Reflection	3%
Visible Light Transmission	0%
UV Transmission	0%
Solar Heat Rejected	78%
Solar energy absorbed	54%
Infra-Red Transmission	0%

### Product Construction

#### Face Film

4 mil Vinyl

#### Adhesive

Solvent-Based Clear Acrylic, Pressure-Sensitive

#### Release Liner

1.5 mil Polyester

### Product Details

SOLYX® SX-1910 Construction Matte Black is a flexible, opaque, black vinyl film that is coated with a removable, pressure-sensitive, acrylic adhesive and backed with a smooth, clear release liner. This film is designed for temporary light and visibility blocking applications to hide interior construction.

**NOTE:** Application environments and certain surfaces such as vinyl, glass, acrylic, styrene, and polycarbonate can cause increased adhesion and adhesive transfer. We recommend that all surfaces be tested for compatibility and removability.

#### Flammability Rating

This product meets ASTM E84 and is classified as Class A as defined in NFPA 101, Life Safety Code®.

#### LEED Credit EQ 4.1 Low Emitting Materials, Adhesives & Sealants

This product has zero VOC content according to 40 CFR 59, Subpart D (EPA method 24).

#### Durability

OUTDOOR: 2-5 years based on vertical exposure and depending on magnitude of UV exposure

INDOOR: 10 years

### Installation and Warranty

#### Installation

Installation should be in accordance with the manufacturer's installation instructions. This film is applied using the same tools and techniques used for installing window tinting films.

#### Warranty

This SOLYX® product will be free from defects in material and manufacture for a period of one (1) year from the date of interior or exterior installation. See warranty information for specific details.

### Product Distribution and Contact Information

#### Distribution

SOLYX® Decorative Films are available through authorized Installing Dealers, Distributors, or directly from Decorative Films, LLC.

Samples submitted upon request.

#### Contact Information

Decorative Films, LLC

1-888-657-5224

[www.decorativefilm.com](http://www.decorativefilm.com)